

**Walpole
Community
Power
Committee**



The Walpole Select Board has established the Walpole Community Power Committee.

Members:

- Rod Bouchard
- Andrew Dey
- Steve Grenier
- Pat Kiniry
- Paul Looney
- Dennis Marcom
- Peggy Pschirrer

Agenda

What is Community Power?

The Electric Aggregation Plan

Timeline for Walpole Community Power program

Questions? Comments



What is Community Power?

- ❖ Community Power programs pool, or aggregate, the demand of all customers in a community and purchase electric power on behalf of that community with the goal of lowering costs and expanding access to renewable energy and other innovations.
- ❖ The typical home uses about 10,000 Kilowatt-Hours (kWh) in a year. Collectively our town uses 2,600 times that or 26,000 Megawatt-Hours. If we pool our buying power – and potentially pool with other towns – our buying power grows considerably, as does the potential for lower electrical costs.
- ❖ Community Power programs are enabled by New Hampshire’s updated Community Power law [RSA 53-E, Relative to Aggregation of Electric Customers by Municipalities & Counties](#). The Legislature’s intent in enacting RSA 53-E was to “encourage voluntary, cost effective and innovative solutions to local needs with careful consideration of local conditions and opportunities”.

New Hampshire cities, towns, and counties can procure **electric power supply** on behalf of their residents and businesses and provide related services.



Pooled Purchasing Power
for **Energy Supply**

- Access to competitive markets
- Lower costs & price stability
- Option to source power locally & access more renewables

Liberty
Continues to **Deliver** Power

- Owns & maintains the power grid
- Delivers generation to load
- Ensures reliable electric service

Community Benefits from
Value Added Services

- Affordable rates
- Access to green power options
- Time-of-Use rate options
- Solar, storage, electric vehicle support



Benefits of Community Power



Local Control

Democratizing energy procurement to the community level



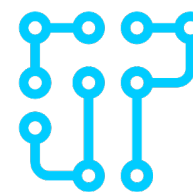
Lower Costs

MA, NY, CA and other markets have demonstrated lower rates than regulated utilities



Renewables

Build & Buy Clean Energy
Support more local renewables



Resilience & Innovation

New Technologies
Market Competition
Price Signals
Customer Empowerment

“Walpole Community Power will only launch if it can initially offer a rate lower than the default energy service rate offered by Liberty . . .”

Page 22 of proposed Electric Aggregation Plan

Meter Number	Type of Service	Rate Code	Read Type	# of Days	Service Dates	(Current - Previous)	x Multiplier	= Usage	Demand
E-40031090	Energy	D	A	35	10/26/21-11/30/21	61399	60499	1	900

For electric emergencies or to report power outages call 1-855-349-9455.

ACCOUNT ACTIVITY

Voltage Delivery Level	0 - 2.2 kv
Previous Balance:	137.02
Payments Received:	137.02 CR
Balance Forward:	0.00
Current Charges:	
Customer Chg	14.74
Distribution Chg 128.57 units @ 0.06086	7.82
Distribution Chg 771.43 units @ 0.06102	47.08
Energy Service 900.00 units @ 0.08396	75.56
Stranded Cost Chg 900.00 units @ -0.00080	0.72 CR
Sys Benefits Chg 900.00 units @ 0.00678	6.11
Transmission Chg 900.00 units @ 0.03703	33.33
Miscellaneous Charges/Credits:	
Total Amount Due:	183.92

SPECIAL MESSAGE

Some customers were slightly overcharged on their last bill. If you were impacted, there will be a "Minimum Charge Credit" and/or "Distribution Adjustment Credit" on this bill. We apologize for the mistake. The 2020 average statewide RPS compliance cost was \$0.0053 per kWh. Information on the RPS, including its benefits, may be found on the Public Utilities Commission website puc.nh.gov/RPS.

KEEP THIS PORTION FOR YOUR RECORDS

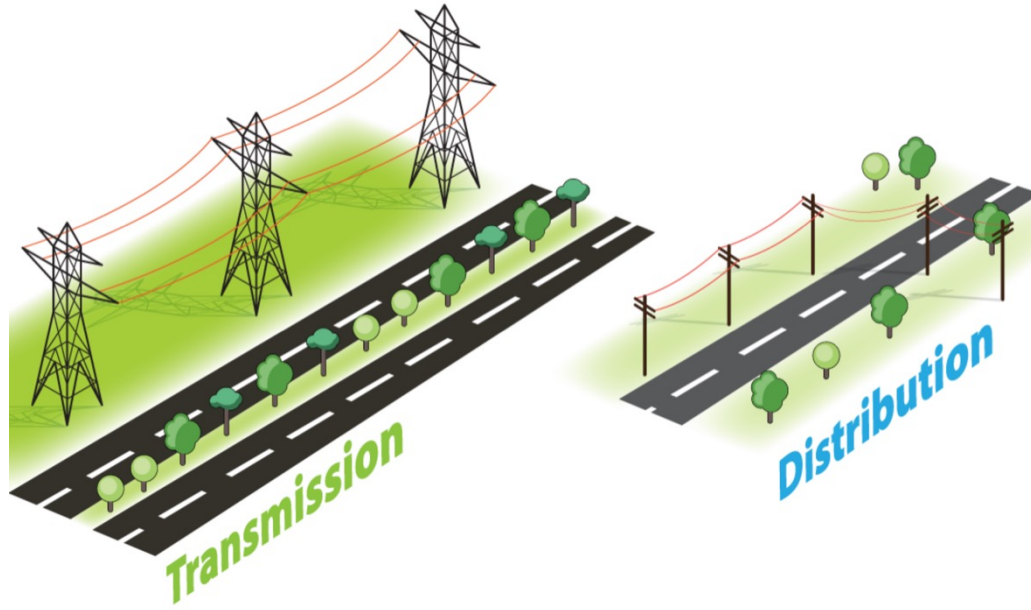
DETACH AND RETURN THIS REMITTANCE PORTION OF THE BILL WITH YOUR PAYMENT

Please include your account number on your check
Make checks payable to Liberty Utilities

Payment Coupon


BALANCE FORWARD	CURRENT CHARGES	AMOUNT DUE	ENCLOSURE AMOUNT
0.00	183.92	183.92	

Please check box and see reverse for: Update phone/address



Key Points

- ❖ Liberty will continue to deliver electricity to customers, and to own and operate the local distribution system (poles, wires, transformers, sub-stations, etc.). They will also continue to provide customer service and billing.
- ❖ The Select Board, with advisory support from the Walpole Community Power Committee, will be authorized to contract for the necessary professional services and power supplies to launch Walpole Community Power WCP. [This assumes we approve at Town Meeting.](#)
- ❖ **Participation in Community Power is completely voluntary.** After the electricity rates are established, all customers not already on competitive supply will be notified and automatically enrolled. However, they can choose to opt-out and stay with Liberty for electricity supply. All customers on competitive supply may choose to opt-in to Walpole Community Power or stay with their current supplier.



What's in it for you?

- ✓ Cheaper power
- ✓ Greener power
- ✓ 100% Renewable

- **Goals of Community Power**

The overall goal of community power aggregation is to harness the power of competitive markets and community-scale purchasing of electricity to reduce costs, increase supply options, enable greater customer choice, and provide services to enhance the lives of customers.

Example of Customer Rates and Optional Products

	Automatic Enrollment	OPTIONAL PRODUCTS	
	Default Service \$	Green Start \$\$	Prime \$\$\$
Attributes	Same as Liberty; Meets Renewable Portfolio Standard (RPS is 22% in 2022)	"RPS +" Up to 50% Renewable	"RPS ++" 50-100% Renewable
Price	Meets or beats default utility at launch	Slightly higher or competitive w/ default utility rate	Exceeds default utility rate

Walpole Community Power Timeline

Study Phase

✓ The Walpole Community Power Committee began to study the benefits of Community Power in June 2020. We have networked with other communities who are developing programs, attended conferences and webinars and followed relevant policies in the NH Legislature.

Development & Community Education Phase

✓ The Select Board authorized the town to:

- 1) Join the Community Power Coalition of NH
- 2) Designate the Walpole Community Power Committee to develop the Energy Aggregation Plan

The WCPC will hold 2 Public Hearings to gather community input: 10/13/21 and 1/26/22.

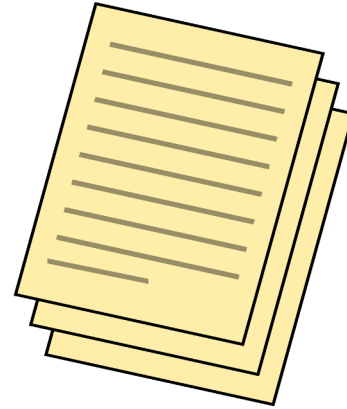
Adoption Phase

A warrant article to approve the Energy Aggregation Plan, thereby approving the Walpole Community Power program, will be presented at the Walpole Town Meeting. The residents of Walpole will vote on the warrant article on March 12, 2022.

Implementation Phase

If approved, the town will:

- notify Liberty and the PUC,
- select an implementation partner
- keep the community informed
- Select Board will approve an agreement for power supply
- customer notifications will be mailed (opt-out, opt-in)
- Public Hearing 3 will be held
- Launch (~3rd qtr)



The Electric Aggregation Plan (EPA)

<https://www.walpolenh.us/town-projects.html>

Purpose of the Electric Aggregation Plan

- ❖ Defines program goals and objectives
- ❖ Defines governance (ex - process for approving rates)
- ❖ Summarizes the anticipated implementation process
- ❖ Commits Walpole to comply with applicable statutes and regulations in terms of:

(a) Providing universal access, reliability, and equitable treatment of all classes of customers;

(b) Meeting, at a minimum, the basic environmental and service standards established by the Public Utilities Commission and other applicable agencies and laws and rules.



The Plan does:

Address issues required to be considered by RSA 53-E including:

- (a) How net metering will be provided; and
- (b) How customers enrolled in the Electric Assistance Program will receive their discount.

The Plan does not:

- Otherwise commit the Town to any defined course of action;
- Does not impose any financial commitment or liability on the Town of Walpole or its taxpayers.



Electric Aggregation Plan Overview

Chapters:

1. Introduction to Community Power
2. Overview of Walpole Community Power
3. The Community Power Coalition of NH
4. Walpole's Goals, Objectives & Requirements
5. Statutory Requirements for Walpole's Plan

Appendices:

1. Legislative Background
 2. Community Power Coalition Background
 3. Renewable Portfolio Standard
 4. Utility Procurement & Rate Setting
 5. Utility Net Energy Metering Tariffs
 6. Opportunities for Walpole: Net Energy Metering, Group Net Metering & Low-Moderate Income Solar Project
- 

Estimated Savings

Estimated Saving is 8%

Example of Savings
(Your Mileage May Vary)

$$8\% \times .08396 = .0067168$$

$$10,000 \text{ kWh} \times .0067168 = \\ \$67.17 \text{ Per Yr.}$$

$$26,000,000 \text{ kWh} \times .0067168 = \\ 174,636$$



Questions/Comments

